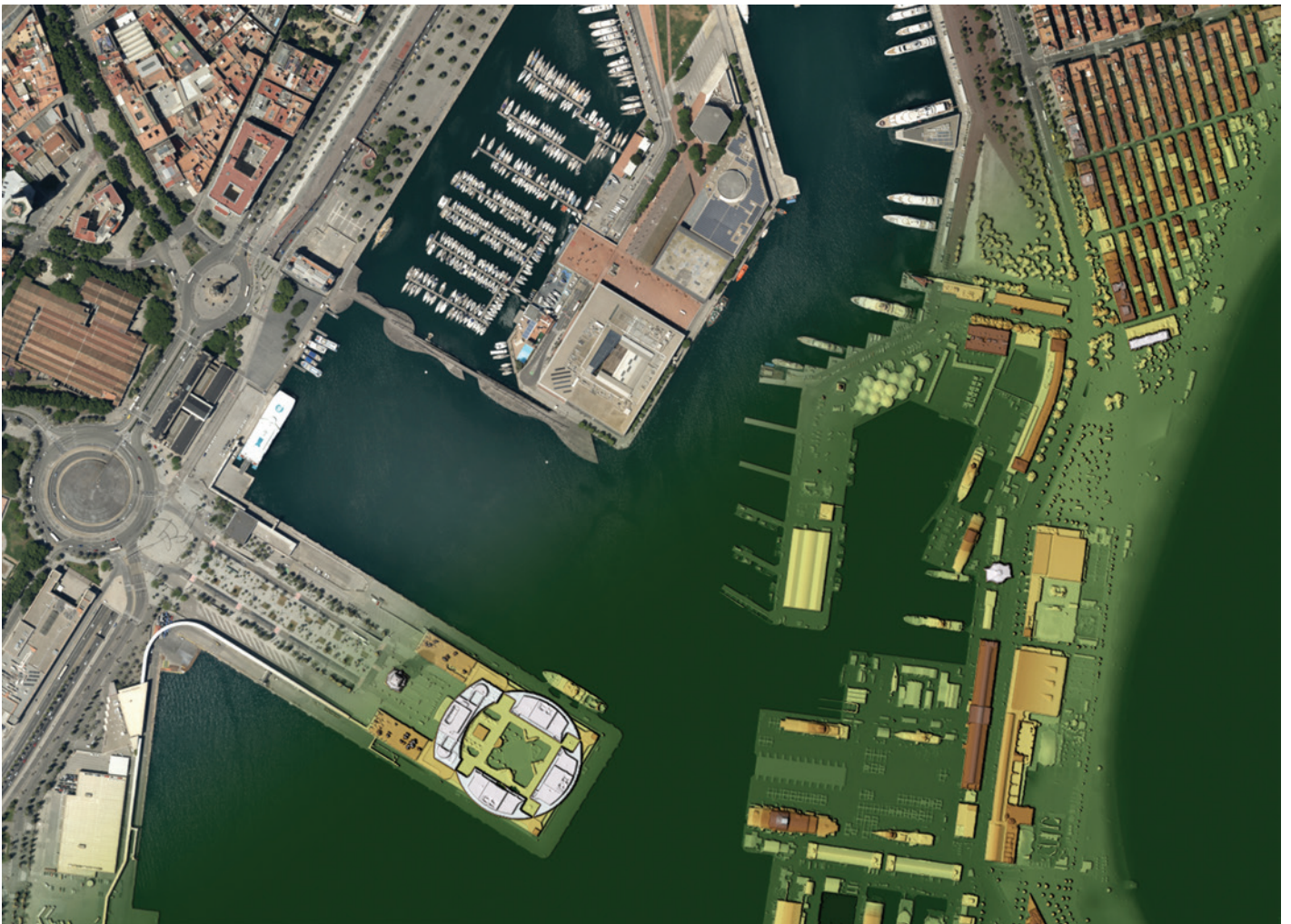


VEXCEL
IMAGING

ULTRAMAP VERSION 6

All-in-one aerial photogrammetry software



ULTRAMAP V6 KEY FEATURES

HIGHLY AUTOMATED FEATURES FOR WATER HANDLING IN DSM, DTM & ORTHOMOSAICS

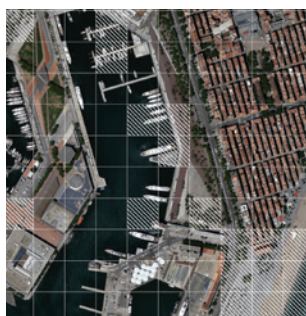
Efficiently quality control and edit the automatically generated water mask in the new Water Mask & Geometry Editor

Import and export vectorized water masks and geometry to re-use in next collection for accelerated data processing

Produce seamless orthomosaics over land and water highly automated for large-scale projects

Create homogenous water surfaces in orthomosaics with the updated Seamline & Blending Mask Editor

Obtain highly accurate, more robust and automatically generated DSM results



REDESIGNED ORTHO REPROCESSING WORKFLOW

Reprocess edits across all ortho products in an even more concise and targeted manner in the Ortho Module

Process when it suits you with the re-introduced processing queue

Maintain flexibility in the editing process with the new undo/redo edit options

ENHANCED ORTHO MODULE PERFORMANCE

Faster loading, viewing and saving of all ortho products in the Ortho Viewer

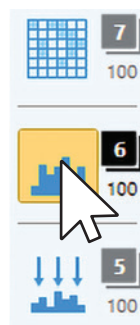
Faster loading and saving in the Heightfield Editor

Speed up opening and saving with smaller project files

Export ortho data of even larger mapsheets faster

Quality control your products with new tools that support an even more comprehensive understanding and handling of your data

Get there faster with an updated user interface, optimized for best user experience



ONE
CLICK
ACTION



NEXT GENERATION PROCESSING

Produce stunning imagery from panchromatic and Bayer Pattern sensors with best perceived sharpness and reduced noise in shadows using the new proprietary True Pixel Processing (TPP) approach

Improved memory management for raw processing and ortho export



ULTRAMAP VERSION 6

Navigate new waters



YOERI SLAGBOOM
ULTRAMAP CUSTOMER

UltraMap is the all-in-one photogrammetry software with highly automated processing capabilities for rapid generation of imagery and 3D spatial data from any UltraCam at large-scale.

Create true photogrammetric quality products with a modular workflow from data ingest to ortho export for nadir and oblique UltraCam imagery. Optimized for large projects, UltraMap offers a high level of integration and automation throughout its software suite, leveraging rich UltraCam raw information wherever possible. The streamlined processing in one intuitive application includes efficient data interaction and editing, powerful visualizations, straightforward quality control

tools and the option of manual interaction, where needed. Successfully complete projects of any size and for any delivery schedule with flexible subscription licensing choices and highly efficient distributed processing for best performance and scalability. UltraMap is based on a holistic approach, where sophisticated machine learning algorithms and new innovative solutions are continuously extended and enhanced, ensuring your business success today and in the future.

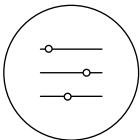
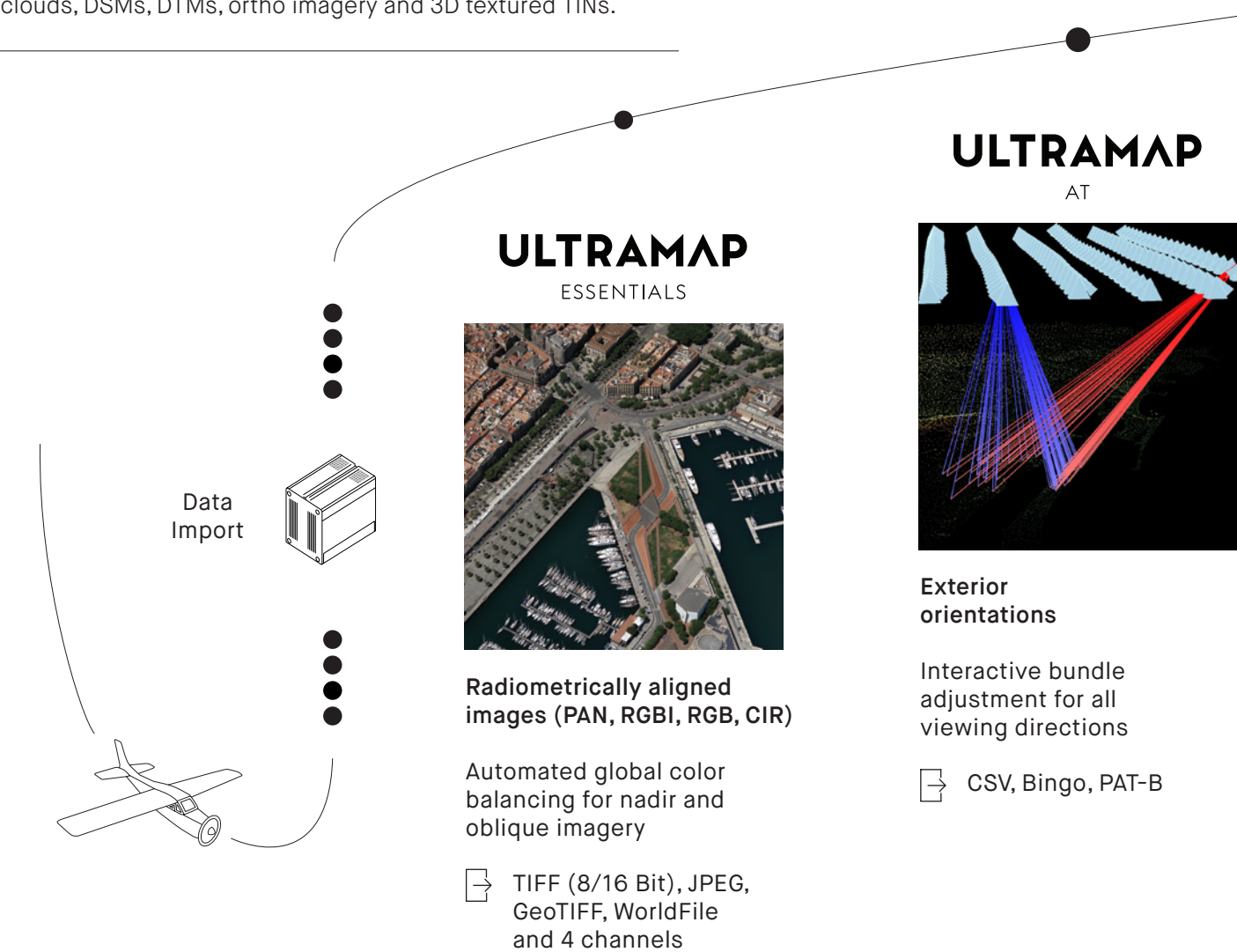
“The UltraMap software has enabled us to process larger imagery projects and much faster than ever before. In turn, this allows us to deliver the end results to clients soon after the flight. This is possible without the need for additional manpower thanks to the UltraMap distributed processing approach which permits us to take advantage of multiple computers.”



QUALITY DATA GENERATION

UltraMap Modules

The end-to-end UltraMap workflow consists of five consecutive modules for delivery of premium UltraCam imagery based point clouds, DSMs, DTMs, ortho imagery and 3D textured TINs.



AUTOMATED GLOBAL COLOR BALANCING

Benefit from simultaneous project-based color balancing and de-hazing over land and water for both nadir & oblique imagery



FLEXIBLE LICENSING OPTIONS

License UltraMap modules on a monthly basis for extended processing power when needed or as lifetime subscription for an unlimited period of time

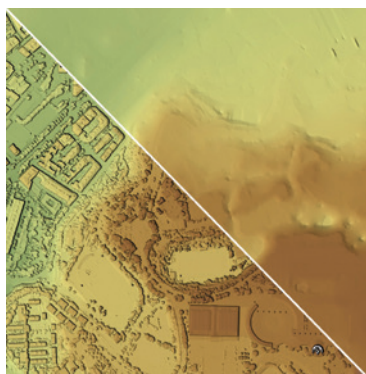


EFFICIENT DATA IMPORT & EXPORT

Import and export vector data for representation of restricted areas, water geometry and ground/non-ground for accelerated data processing

ULTRAMAP

DENSE MATCHER



DSMs, DTMs and colored point clouds

High-density elevation with sharp edges and accurate geometry

↳ GeoTIFF, LAS

ULTRAMAP

ORTHO PIPELINE



DSMOrthos and DTMOrthos

Sharp and noise free images with fine detail throughout the entire image

↳ GeoTIFF, WorldFile, Seamlines

ULTRAMAP

3D



3D textured TINs and point clouds

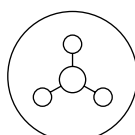
3D data generation plus interactive view and export module

↳ LAS, OBJ, DAE, OSGB, LODTreeExport



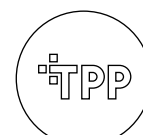
INTUITIVE DATA INTERACTION & QUALITY CONTROL

Take advantage of fast viewing speeds for any number of images and use a variety of tools for quality control and editing of data in one user interface



POWERFUL DISTRIBUTED PROCESSING

Setup and flexibly configure processing clusters before and during operation with optional GPU support and unlimited amount of front-end users



TRUE PIXEL PROCESSING

Produce stunning imagery from panchromatic and Bayer Pattern sensors with our proprietary solution for best noise performance and perceived sharpness

BENEFIT FROM
OUR TECHNOLOGY

When you partner with Vexcel Imaging,
you get more than a camera.

You get cutting-edge technology combined
with a progressive service concept for
constant product upgrades, world-class
support and one-stop solutions.

Today and tomorrow.



Vexcel Imaging GmbH • Anzengrurgasse 8 • 8010 Graz • Austria
www.vexcel-imaging.com

